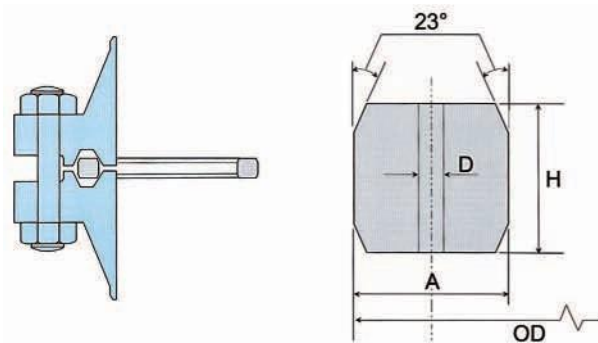


## RTJ – BX Type

the Style BX energized ring type Joints, manufactured in accordance with as Me B16.20, API 6A and API 17D, are designed for use on API 6BX flanges on pressure systems rated up to 20,000 psi. When correctly fitted, the style BX gasket allows virtual face to face contact of the flange faces which means that the gasket is fully confined on both the inner and outer diameters. all BX gaskets incorporate a pressure balance hole to ensure equalization of pressure which may be generated in the grooves.



### DIMENSIONAL DATA - STYLE BX



### STYLE BX TOLERANCES

| Dimension                    | Tolerances (mm) |             |
|------------------------------|-----------------|-------------|
|                              | API 6A & 17D    | ASME B16.20 |
| A Width of ring              | +0.20/-0.0      | +0.20/-0.00 |
| C Width of flat              | +0.15/-0.0      | +0.15/-0.00 |
| D Hole size                  | +0.5            | +0.5        |
| H Height of ring             | +0.20/-0.0      | +0.20/-0.00 |
| OD Outside diameter          | +0.0/-0.15      | +0.00/-0.15 |
| ODT Outside diameter of flat | ±0.05           | ±0.05       |
| 23° Angle of sealing face    | ±0° 15'         | ±0° 15'     |

Maximum surface finish of the Style BX Ring Type Joint sealing faces (23° angled faces) shall not be greater than 0.8 µm Ra / 32 µin RMS.

**NOTE 1:**

Machined radii located between all 23° angled sealing facings and the top and bottom flat faces, shall be 8% to 12% of the ring height 'H'.

| API 6BX |      |        |         |         |         | Tolerance | +0/-0.15<br>mm | +0.20/-0<br>mm | +0.20/-0-<br>mm | +/-0.05<br>mm | +0.15/-0<br>mm    | 8 - 12%<br>Gasket Height             |      | ±0.50<br>mm                        |
|---------|------|--------|---------|---------|---------|-----------|----------------|----------------|-----------------|---------------|-------------------|--------------------------------------|------|------------------------------------|
| 2000    | 3000 | 5000   | 10000   | 15000   | 20000   | BX        | OD<br>(mm)     | H<br>(mm)      | W<br>(mm)       | ODT<br>(mm)   | 'C' Width<br>(mm) | Radius between flat<br>and angle 'R' |      | One<br>pressure<br>passage<br>hole |
|         |      |        |         |         |         |           |                |                |                 |               |                   | Max                                  | Min  |                                    |
| ....    | .... | ....   | 1 11/16 | 1 11/16 | ....    | BX 150    | 72.19          | 9.30           | 9.30            | 70.87         | 7.98              | 1.12                                 | 0.74 | 1.60                               |
| ....    | .... | ....   | 1 13/16 | 1 13/16 | 1 13/16 | BX 151    | 76.40          | 9.63           | 9.63            | 75.03         | 8.26              | 1.16                                 | 0.77 | 1.60                               |
| ....    | .... | ....   | 2 1/16  | 2 1/16  | 2 1/16  | BX 152    | 84.68          | 10.24          | 10.24           | 83.24         | 8.79              | 1.23                                 | 0.82 | 1.60                               |
| ....    | .... | ....   | 2 9/16  | 2 9/16  | 2 9/16  | BX 153    | 100.94         | 11.38          | 11.38           | 99.31         | 9.78              | 1.37                                 | 0.91 | 1.60                               |
| ....    | .... | ....   | 3 1/16  | 3 1/16  | 3 1/16  | BX 154    | 116.84         | 12.40          | 12.40           | 115.09        | 10.64             | 1.49                                 | 0.99 | 1.60                               |
| ....    | .... | ....   | 4 1/16  | 4 1/16  | 4 1/16  | BX 155    | 147.96         | 14.22          | 14.22           | 145.95        | 12.22             | 1.71                                 | 1.14 | 1.60                               |
| ....    | .... | ....   | 7 1/16  | 7 1/16  | 7 1/16  | BX 156    | 237.92         | 18.62          | 18.62           | 235.28        | 15.98             | 2.23                                 | 1.49 | 3.20                               |
| ....    | .... | ....   | 9       | 9       | 9       | BX 157    | 294.46         | 20.98          | 20.98           | 291.49        | 18.01             | 2.52                                 | 1.68 | 3.20                               |
| ....    | .... | ....   | 11      | 11      | 11      | BX 158    | 352.04         | 23.14          | 23.14           | 348.77        | 19.86             | 2.78                                 | 1.85 | 3.20                               |
| ....    | .... | ....   | 13 5/8  | 13 5/8  | 13 5/8  | BX 159    | 426.72         | 25.70          | 25.70           | 423.09        | 22.07             | 3.08                                 | 2.06 | 3.20                               |
| ....    | .... | 13 5/8 | ....    | ....    | ....    | BX 160    | 402.59         | 23.83          | 13.74           | 399.21        | 10.36             | 2.86                                 | 1.91 | 3.20                               |
| ....    | .... | 16 3/4 | ....    | ....    | ....    | BX 161    | 491.41         | 28.07          | 16.21           | 487.45        | 12.24             | 3.37                                 | 2.25 | 3.20                               |
| ....    | .... | 16 3/4 | 16 3/4  | 16 3/4  | ....    | BX 162    | 475.49         | 14.22          | 14.22           | 473.48        | 12.22             | 1.71                                 | 1.14 | 1.60                               |
| ....    | .... | 18 3/4 | ....    | ....    | ....    | BX 163    | 556.16         | 30.10          | 17.37           | 551.89        | 13.11             | 3.61                                 | 2.41 | 3.20                               |
| ....    | .... | ....   | 18 3/4  | 18 3/4  | ....    | BX 164    | 570.56         | 30.10          | 24.59           | 566.29        | 20.32             | 3.61                                 | 2.41 | 3.20                               |
| ....    | .... | 21 1/4 | ....    | ....    | ....    | BX 165    | 624.71         | 32.03          | 18.49           | 620.19        | 13.97             | 3.84                                 | 2.56 | 3.20                               |
| ....    | .... | ....   | 21 1/4  | ....    | ....    | BX 166    | 640.03         | 32.03          | 26.14           | 635.51        | 21.62             | 3.84                                 | 2.56 | 3.20                               |
| 26 3/4  | .... | ....   | ....    | ....    | ....    | BX 167    | 759.36         | 35.86          | 13.11           | 754.28        | 8.03              | 4.30                                 | 2.87 | 1.60                               |
| ....    | .... | ....   | ....    | ....    | ....    | BX 168    | 765.25         | 35.86          | 16.05           | 760.17        | 10.97             | 4.30                                 | 2.87 | 1.60                               |
| ....    | .... | ....   | 5 1/8   | ....    | ....    | BX 169    | 173.51         | 15.85          | 12.93           | 171.27        | 10.69             | 1.90                                 | 1.27 | 1.60                               |
| ....    | .... | ....   | 6 5/8   | 6 5/8   | ....    | BX 170    | 218.03         | 14.22          | 14.22           | 216.03        | 12.22             | 1.71                                 | 1.14 | 1.60                               |
| ....    | .... | ....   | 8 9/16  | 8 9/16  | ....    | BX 171    | 267.44         | 14.22          | 14.22           | 265.43        | 12.22             | 1.71                                 | 1.14 | 1.60                               |
| ....    | .... | ....   | 11 5/32 | 11 5/32 | ....    | BX 172    | 333.07         | 14.22          | 14.22           | 331.06        | 12.22             | 1.71                                 | 1.14 | 1.60                               |
| 30      | 30   | ....   | ....    | ....    | ....    | BX 303    | 852.75         | 37.95          | 16.97           | 847.37        | 11.61             | 4.55                                 | 3.04 | 1.60                               |